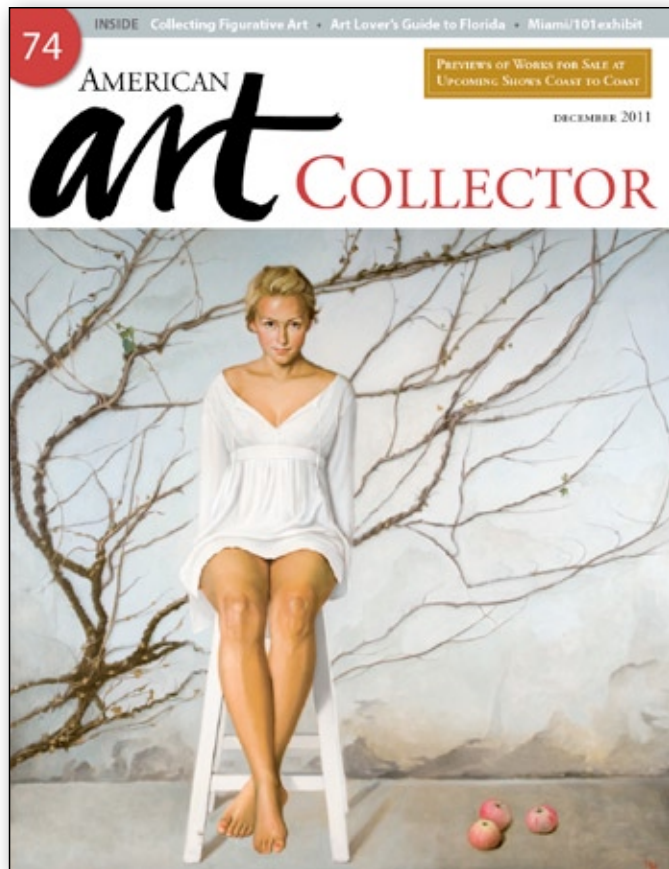


As seen in the
December 2011 issue of

 AMERICAN
art COLLECTOR



UPCOMING GROUP SHOW

Up to 100 works

December 2-31, 2011

Roby King Galleries

176 Winslow Way East

Bainbridge Island, WA 98110

(206) 842-2063

• SHOW LOCATION BAINBRIDGE ISLAND, WA

Seasonal treasures

Roby King Galleries kicks off the holidays on December 2 with its annual *Small Works* exhibition featuring approximately 100 new small-scale gems in a range of styles and subject matter.

This year's holiday invitational will feature more than 35 artists including **Neal Philpott**, **Diane Ainsworth**, **Richard Hall**, **Raenell Doyle**, **Robert Schlegel**, and **Cheri Christensen**, plus newcomers **Peter Batchelder**, **Stuart Dunkel**, **Jen Violette**, and **James Carter**.

This marks Neal Philpott's fourth year participating in the holiday show. Whether painting small scale (10 x 10") or twice that size, Philpott says each requires equal effort. "The composition must be really strong," he notes.

Philpott's petite submission, *Out Crop*, was informed by the odd color palette. "There was maximum contrast in light and shadow. The skies were an overcast bruised purple, yet an opening in the clouds illuminated the side of a rocky outcrop a bright yellow green," he explains. "I hope the viewer enjoys the stolen moment of light because the clouds closed up and remained that way the rest of the day."

Diane Ainsworth has been with the gallery for 14 years and has joined in each holiday exhibition since they began. A resident of Washington's Port Townsend, Ainsworth found her inspiration for *Dockside* from this year's annual Wooden Boat Festival.

"I love the abstract designs the boats make when they are in the slips alongside each other," says Ainsworth. "This scene attracted me because of the values, colors, abstract forms and, most of all, the light patterns. I wanted to convey the warm light in the early evening and the energy of the festival and people."

Ainsworth says small paintings like *Dockside* require "just as much planning and designing as larger works. The real difference is that the actual painting process may be shorter."

Peter Batchelder will join the show with *Blue Barn*, based on his affinity for barns and architecture in general. "But my pursuit in painting barns is less to simply do paintings of barns, but to use the shapes of barns and to push the palette to an almost abstraction, where color, texture, and brushwork are more the focus of the painting than the structure," says Batchelder. "*Blue Barn* is about color and shape and texture and is one I feel works as well in its small scale, as it would as a larger piece." •



DIANE AINSWORTH, DOCKSIDE, OIL ON PANEL, 9 X 12"



PETER BATCHELDER, BLUE BARN, OIL ON CANVAS, 12 X 12"

For a direct link to the exhibiting gallery go to



www.americanartcollector.com



RAENELL DOYLE, ROSIE DAY, OIL ON CANVAS, 9 X 12"



NEAL PHILPOTT, OUT CROP, OIL ON PANEL, 10 X 10"

The Gallery Says . . .

"We love to host this exhibit during the holiday season! This is a great time to add a favorite artist to your collection; imagine a cluster of small paintings on your wall, it will make a powerful artistic statement!"

*—Andrea Roby-King, Co-owner,
Roby King Galleries*